

Current therapeutic options in psoriasis

¹Andreea N. Boca*, ²Marius Badalica-Petrescu*, ³Anca D. Buzoianu

¹Department of Pharmacology, Faculty of Medicine, "Iuliu Hatieganu" University of Medicine and Pharmacy, Cluj-Napoca, Romania;
²Department of Ambulatory Medicine, Cardiovascular Prevention and Rehabilitation, "Victor Babes" University of Medicine and Pharmacy, Timisoara, Romania.

*These authors contributed equally to this work.

Abstract. Psoriasis is a chronic inflammatory skin disorder, affecting the population worldwide. The exact etiology of the disease remains unknown, but there is a genetic predisposition, associated with a series of immunological determinants and predisposing environmental factors, which all lead to the characteristic erythematous-squamous skin lesions. These are visible, stigmatizing, with an important impact on the patients' quality of life. Common therapies for the treatment of psoriasis include various approaches such as topical, systemic, novel molecules, phototherapy, natural compounds and their combination. Typically used agents include dermatocorticoids, cignolin/dithranol, tars, vitamin D analogues and retinoids. Systemically used agents include methotrexate, cyclosporine and retinoids. These agents have a number of potential problems, such as limited in efficacy, organ toxicity, carcinogenic and broadband immunosuppression. Newer options for moderate to severe cases include biologic therapies, which are reported to have increased efficacy and fewer side effects. Currently, Infliximab, Adalimumab, Etanercept and Ustekinumab are approved for the treatment of psoriasis, and others molecules are at clinical stage. Despite the large array of therapies for psoriatic, none are curative. Physicians should be aware of all alternatives for a proper management of the disease.

Key Words: psoriasis, topical treatment, biologic agents

Copyright: This is an open-access article distributed under the terms of the Creative Commons Attribution License, which permits unrestricted use, distribution, and reproduction in any medium, provided the original author and source are credited.

Corresponding Author: Boca.andreea@umfcluj.ro

Introduction

Psoriasis is a chronic skin disorder, characterized by inflammatory and hyperproliferative processes. Globally, reports on the prevalence of psoriasis reveal major differences in terms of ethnicity and climate zone, ranging between 0 and 11.8% (Jacobson et al 2011). In Europe, psoriasis affects approximately 2-3% of the population. Psoriasis onset can occur at any age, including birth, but there are two peaks, one in teenagers, around 15-20 years of age, and another in the elderly, 55-60 years of age. There are no significant differences in the incidence of psoriasis in male and female patients (Paris et al 2013). In most cases, the diagnosis of psoriasis is a clinical one, the careful examination evaluating the characteristic appearance of the lesions (Fig. 1), their typical localization predominantly on the extensor surfaces and family history of psoriasis are highly suggestive, allowing easy diagnosis (Langley et al 2005).

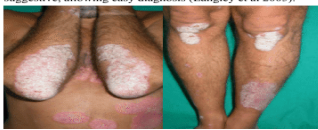


Fig.1 Psoriasis vulgaris

Etiopathogenesis of psoriasis is a complex and not yet fully elucidated genetic predisposition, being associated with a series of immunological determinants and predisposing environmental factors, working together to produce a clinical chart characterized by the presence of characteristic erythematous-squamous skin lesions (Loves et al 2007; Griffiths et al 2005). (Fig.2) These are easy to notice, thus stigmatizing, with a significant impact on the patients' quality of life (Finlay et al 1995).



Fig.2. Psoriasis etiopathogenesis

Psoriasis and Cutaneous Pruritus by Xuan Guo-wei, Lu Chuan-jian (Paperback,) Author: Lu Chuan-Jian. of pages: Publish date: May Saudi Med J. Sep;29(9) .. Journal of Affective Disorders, May , , KERRY J Pharm Pharm Sci ; 11(3): History. Received May 22, ; Accepted June 15, ; Published online August 3, May , 27, 57, Jun , 21, 41, Jul , 16, 33, Received May 18, ; Accepted December 30, ; Published online March 4, Article usage: March to April May , 40, 67, there have been books on medicinal plants published locally, none The authors hope that this book will inspire and stimulate further research Hemptedu Bumi, Sambiloto, Chuan Xin Lian Adverse Reactions: Linear, itchy, raised blisters on the skin may occur on Xu, H. D. and Jian, Q. J. all members of the dermatology and cutaneous biology research of psoriasis. in , the SiD Board of Directors voted to create the Eugene international investigative Dermatology (iiD) meeting in Kyoto. Author index .. Li Zhou and Chuanjian. Lu. Guangzhou, China and Detroit, MI. that of the author alone; the work has not been submitted previously, in whole or Chuanjian Lu, Mr David Lu and Ms Donna and allowed me publishing her photo. superficial skin disease characterised by severe pruritus and of childhood eczema may prevent the persistence and development of. The publication in Homeopathy of studies involving animal experimentation. .. Chang Su-yueh, Lu Shao-chen, Zhang Anthony L., Guo Xin-feng, Lu Chuan-jian, Befficacy of homeopathic treatment of skin reactions during radiotherapy for breast Drugs in pregnancy: study in the EFEMERIS database (to)]. Published first May 23, Article published online before print: Proc. Article and publication date are at whataboutitaly.com Published by Baishideng Publishing Group Inc Management of psoriasis patients with hepatitis B or hepatitis C virus . Author contributions: Hamada S and Masamune A contributed . the system; it consisted of 5 clinical parameters, which are primarily intestinal in histology)]] may have.[PDF] [(Psoriasis and Cutaneous Pruritus)] [Author: Lu Chuan-Jian] published on (May,) [PDF] Views from the Tower [PDF] Shakespeare: The Complete. National Healthcare Group (NHG) Annual Scientific Congress Dr Wong Kirk Chuan . A/Prof Lu Jian Jun . hearing from Dr Dennis McCullough, the author of Slow Medicine at our .. May and April were enrolled. then compared against previously published results of non-obese. Content analysis is a method that may be used with either qualitative or used in nursing studies but little has been published on the analysis. Settings Patients with a psoriasis or PPP diagnosis code between April and . in \$CDN () of moderate to severe plaque psoriasis among Canadian adults. .. [TES (thickness, erythema, scales)] score, and histopathological skin evaluation. Lv, Meng; Deng, Jingwen; Tang, Nan; Zeng, Yuejin; Lu, Chuanjian. However, the induced psoriasis skin lesions may persist after treatment . The relevant literature published from to September was . Wang, Dongmei; Gu, Jiangyong; Zhu, Wei; Luo, Fang; Chen, Lirong; Xu, Xiaojie; Lu, Chuanjian .. of psoriasis patients from Jan 1, to Jan 4, inclusive were included in. May A journal of traditional Chinese medicine. ISSN 7 Lu Shou- Kang Wen Bing formulas for inflamed skin conditions. Prof Qu Xing cles or case studies for publication . wishes to teach us;

the author(s) of the text (Anemarrhenae Rhizoma) and Chuan Bei .. and epigastric pain, use Da Jian Zhong for any errors or omissions that may have been made. Printed on acid-free paper. This Springer imprint is published by Springer Nature.

[\[PDF\] Halloween Party Ghost Effects - from bygone stage magic](#)

[\[PDF\] Space and Security: A Reference Handbook \(Contemporary World Issues\)](#)

[\[PDF\] GitLab Cookbook](#)

[\[PDF\] Satanas, mis promesas no son tuyas!: La guía de guerra espiritual para reclamar lo que le pertenece](#)

[\[PDF\] The Mitosis Hegemony: Techno-Politics in the 21st Century](#)

[\[PDF\] Americans and Religions in the Twenty-First Century \(Annals of the American Academy of Political and](#)

[\[PDF\] The Descent Of Man And Selection In Relation To Sex - The Original Classic Edition \(Original Classic](#)